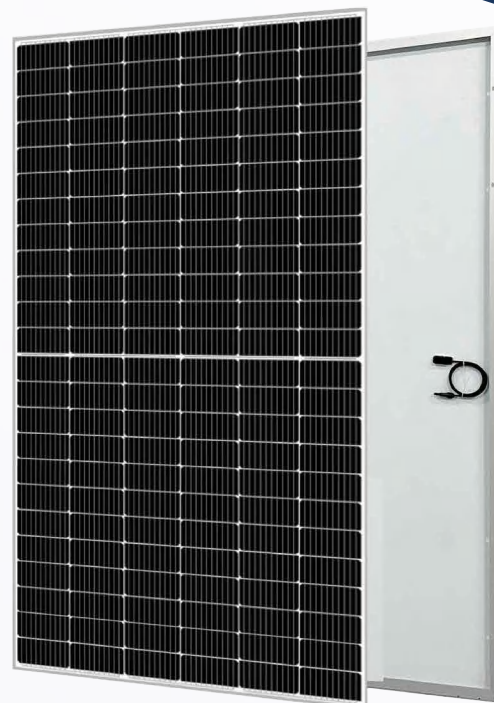
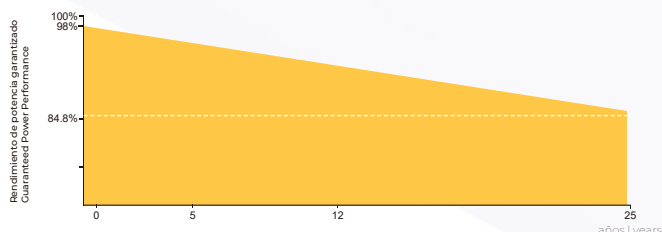


Monocrystalline 144-cell Module

BE Series 350W | 0-3% Positive Tolerance

GARANTÍA DE RENDIMIENTO LINEAL LINEAR PERFORMANCE WARRANTY



12Years Enhanced Product Warranty on Materials and Workmanship 25Years Linear Power Performance Warranty



High efficiency

PERC technology improves efficiency, increases power generation, and contributes to lower LCOE.



Lower heat spot Risk

Innovative circuit design and "HalfCell" structure decrease the temperature of heat spots and effectively reduce power loss.



Excellent low-light performance

Reliable performance in low-light conditions such as in the morning, at dusk or during raining days.



Resilient to extreme weather

Carefully selected materials ensure the module still works well under the condition of 2400Pa wind load and 5400Pa snow load.



PID resistant

High quality solar cell and advanced processing technology contribute to excellent PID resistance performance.



Bloomberg
NEW ENERGY FINANCE



Anti-PID
System voltage durability
PPP 56042



+34 985 194 232



www.bexieenergy.com



Calle Peña Santa 68, Polígono Industria
Silvota, 33192, Llanera, Asturias

Technical specifications

battery module	Monocrystalline silicon photovoltaic cell module
Quality level of battery cells	A-level
Peak parameters at AM1.5, 1000w/m2 irradiance, and 25°C battery temperature:	
Standard power	Not less than 350W
Optimal power point voltage v_{mp} (V)	37V
Optimal power point current I_{mp} (A)	9.46A
Short circuit current I_{sc} (A)	10.33A
Open circuit voltage V_{oc} (V)	44.5V
system voltage	Maximum system voltage 1000VDC
Cell conversion efficiency	$\geq 23\%$
Peak power temperature coefficient (%/k)	$(0.5 \pm 0.05)\%/^{\circ}\text{C}$
Short circuit current temperature coefficient (%/k)	$(0.06 \pm 0.01)\%/^{\circ}\text{C}$
Open circuit voltage temperature coefficient (mV/k)	$-(155 \pm 10)\text{mV}/^{\circ}\text{C}$
Working temperature range	-40 to +85°C
Power error range	$\pm 3\%$
solar cell	Monocrystalline silicon wafer 158mm* 158mm
Number and arrangement of batteries	seventy-two
connector	MC4
Protection level of junction box	IP65
Connection wire length of junction box	Positive electrode 750mm,negative electrode 750mm,4.0mm2
Component size	1956*992*35mm
Tempered glass	1950*986*3.2